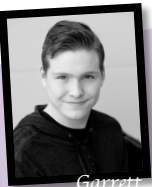




Connor



Dallin



Garrett



Geoff



Grant



Kate



Kaylie



Kaylie



Lydia



Maggie



Chase



Brooklyn



Bailey



April



Abrielle



Abilene



Rosie



Sarah



Shayla



Tevan



Trenton



Victoria

PIPPIN

Directed and Choreographed by Toni Butler
Music Direction by Erin Walker
Music and Lyrics by Stephen Schwartz
Book by Roger O. Hirson

THE CAST:

PIPPIN.....GEOFFERY BECKSTRAND
 LEADING PLAYER.....TEVAN MCPEAK
 CHARLES.....GRANT ALSTON
 LEWIS.....TRENTON CONOVER
 FASTRADA.....APRIL KERR
 BERTHE.....ROSEMARY CANNON
 CATHERINE.....SARAH JENSEN
 THEO.....DALLIN THERIAULT
 PLAYERS.....ABILENE KUGLER
 ABRIELLE HAMBLETON
 APRIL KERR
 BAILEY REID
 BROOKLYN ALLISON
 CHASE BELNAP
 CONNOR VINCENT
 DALLIN THERIAULT
 GARRETT WARR
 GRANT ALSTON
 KATE DE GROOTE
 KATE ZANDER
 KAYLIE WALKER
 LYDIA BUTLER
 MAGGIE SCOTT
 ROSEMARY CANNON
 SARAH JENSEN
 SHAYLA WIMMER
 TRENTON CONOVER
 VICTORIA WHITE

SCENE SYNOPSIS:

SCENE ONE: THE OPENING "Magic to Do" Leading Players & Players
 "Corner of the Sky" Pippin
 SCENE TWO: HOME
 SCENE THREE: WAR "War is a Science" Charles, Pippin, & Players
 "Glory" Leading Player, Pippin, & Players
 SCENE FOUR: THE FLESH "Simple Joys" Leading Player, Pippin, Women
 "No Time at All" Berthe, Pippin, & Men
 "With You" Pippin & Women
 SCENE FIVE: REVOLUTION "Spread a Little Sunshine" Fastrada, Lewis
 "Morning Glow" Pippin, Players
 "Finale" Leading Player, Pippin, Players
 10 MINUTE INTERMISSION
 SCENE ONE: ENCOURAGEMENT "On the Right Track" Leading Player & Pippin
 SCENE TWO: THE HEARTH "Kind of Woman" Catherine
 "Extraordinary" Pippin, Players
 "Prayer for a Duck" Pippin & Theo
 "Love Song" Pippin & Catherine
 "I Guess I'll Miss the Man" Catherine
 SCENE THREE: THE FINALE "Finale" Leading Player, Pippin, Players

THE BAND

Conductor/Keyboard 2.....Michelle Willis Trumpet.....Rick Marbury
 Keyboard 1.....Jennifer Hansen Guitar.....Stuart Duff
 Reed 1.....Sina Chatelain Drums.....Jake Bradshaw
 Reed 2.....LeighAnne Duff Percussion.....Angel Williams

20
17

PIPPIN

Director's Note

Ever since I first saw Pippin years ago, I have wanted to direct this beautiful allegory of truly finding your place in this world. Teen Boot Camp was the perfect place to tell this tale. Pippin's journey encourages us to dream but to also have the courage to discern what will bring us real joy in this life. We have worked so hard and had a wonderful time with Stephen Schwartz and Bob Fosse; two legends of musical theatre. Enjoy this incredible gem!

~Toni Butler



JUNE, 2018

WEST SIDE STORY

AUDITIONS: APRIL, 2018

Produced with special arrangement
by Music Theatre International
421 W. 54th Street, 2nd Floor
New York, NY, 10019

